

Museu de L'Hospitalet

ENGLISH
VERSION



Ajuntament de L'Hospitalet



CASA ESPANYA

GROUND FLOOR

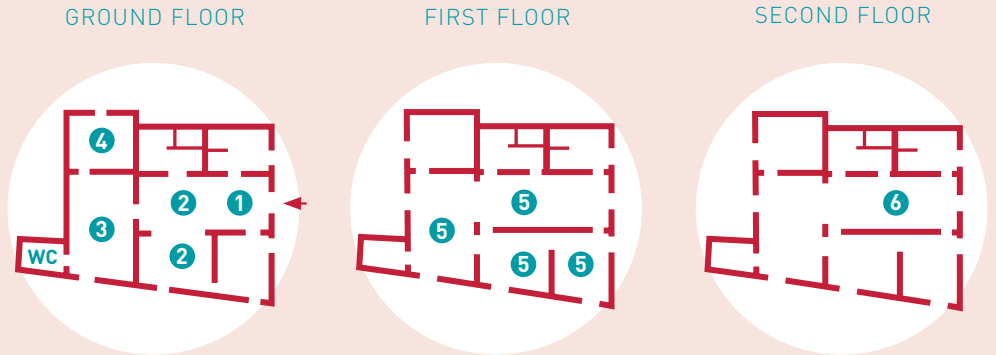
- 1 Reception area
- 2 Exhibition: "L'Hospitalet, a place, a history"
1890-1920 Chimney smoke
- 3 1920-1960 Modernity frustrated
- 4 1960-1992 Approaching modern-day l'Hospitalet

FIRST FLOOR

- 5 Temporary exhibition

SECOND FLOOR

- 6 Exhibition "20th century l'Hospitalet.
L'Hospitalet and democratic memory"



L'HARMONIA

GROUND FLOOR

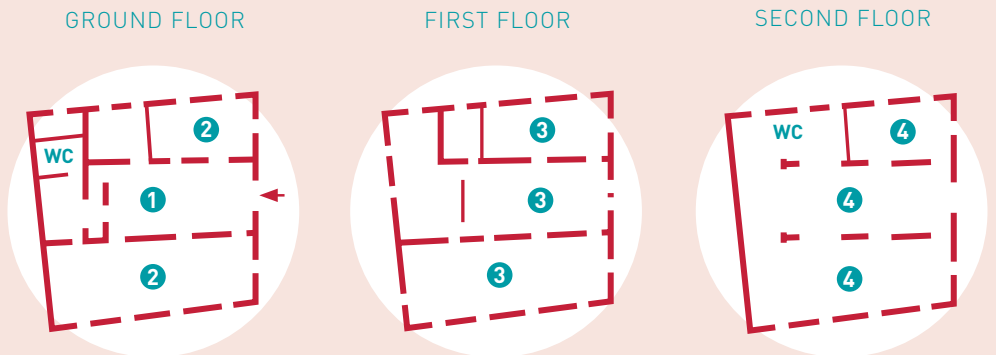
- 1 Reception and information
- 2 Temporary exhibition

FIRST FLOOR

- 3 "Colour, shape... and volume.
Altarpieces of the church of l'Hospitalet"

SECOND FLOOR

- 4 Multi-use rooms



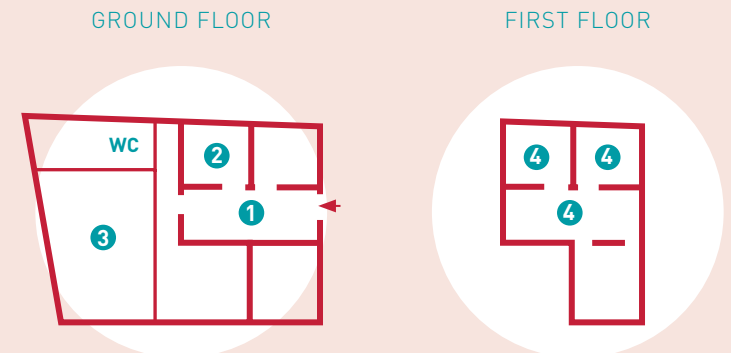
CAN RIERA

GROUND FLOOR

- 1 Reception and information
- 2 Document archive
- 3 Multi-use room and education services

FIRST FLOOR

- 4 Technical and administrative services



MUSEUM OF L'HOSPITALET

It officially opened as a local museum in 1972. Since its creation, visitors have enjoyed the city's treasures, while learning about its origins, which are also our own.

The Museum administers l'Hospitalet's cultural legacy through the conservation, research, dissemination and exhibition of the city's heritage; showcasing the past, sharing dialog with the present, and building the future.

The Museum of l'Hospitalet aims to be at the centre of the cultural metropolis, with an innovative, inclusive style that is open to all communities, and works to facilitate preservation of its cultural heritage.

It aspires to be a pole of attraction that motivates associations and individuals of l'Hospitalet to participate in building a future based on awareness of an urban, collective, metropolitan and empowered identity.

SERVICES

- Educational activities for all ages, and the educational community.
- Exhibits accessible for visitors with functional diversity.
- Archive and document collection access.
- Auxiliary library and document archive.
- Technical guidance for research projects.
- Tailored adaptations of activities and visits.
- Sale of publications.
- WiFi area.
- Rooms can be reserved



CASA ESPANYA

“L’Hospitalet: a place, a history”

This exhibit explores the evolution of L’Hospitalet over the 20th century via three thematic areas: political, economic and social. The focus is on its transition from a farming town of 5,000 inhabitants to a post-industrial city with a population of over 250,000.

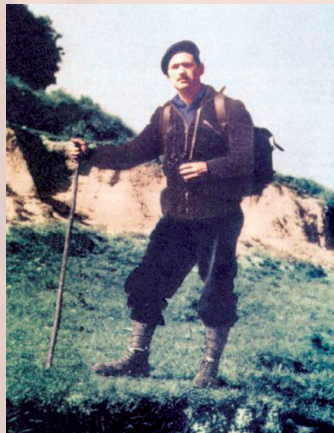


Preparing the scythe (1983). By Bernardí Fornals. H-3202

“L’Hospitalet and democratic memory”

An exhibit that delves into the political and social changes the city lived through from the early 20th century, with the democratic hopes placed in the Second Republic, later shattered by the Spanish Civil War and Francoist dictatorship, up to the first democratic elections. It is a tribute to the entire anti-Francoist resistance.

- 1 Allegorical bust of the Republic. Donated by F. Salvat and J. Vilar. H-4069.
- 2 Quico Sabaté, an anarchist maqui guerrilla fighter from L’Hospitalet.
- 3 Demonstration against unemployment, 1978. Donated by local chapter of CC00 LH. AMLHAF2572.



L'HARMONIA

“Colour, shape... and volume. Altarpieces of the church of l'Hospitalet”

This exhibit features different artistic works salvaged from l'Hospitalet's Santa Eulàlia de Mérida church, demolished in 1936. A total of 19 oil paintings on wood and 11 architectural elements make up the exhibition.

Each room is devoted to one of the three restored altarpieces, with information on each of them, and the altarpieces themselves, in addition to keys to view and interpret the works. The exhibit also offers general contextual information on the town of l'Hospitalet in those times, and the church that housed the altarpieces. There is an additional explanation of the restoration process.

- ❶ 16th c. impost with male bust.
- ❷ 16th c. altarpiece of Saint Roch. Attributed to Jaume Huguet.
- ❸ Architectural elements and interpretation.



XIPRERET STREET



The Xipreret Street Axis is one of the city's key heritage areas. Here l'Hospitalet's historical centre is articulated around the White Tower (L'Harmonia), whose documented origins date back to the 11th century. Starting in the 16th century, the street underwent a major expansion phase with the construction of several large houses.

Among the unique traits are its *corralons*, small squares open to the main street, built in front of the houses as a community space equipped with wells and washing tanks to do laundry.

The concentration of historic buildings, and the atmosphere of the street have consolidated Xipreret Street as a site of landscape, historic and architectural reference of the roots of l'Hospitalet's Old Quarter.



Museu de l'Hospitalet

Tel. 93 403 61 10
cultura.museu@l-h.cat

Casa Espanya

C. de Joan Pallarès, 38

L'Harmonia

Pl. de Josep Bordonau i Balaguer, 6

Can Riera

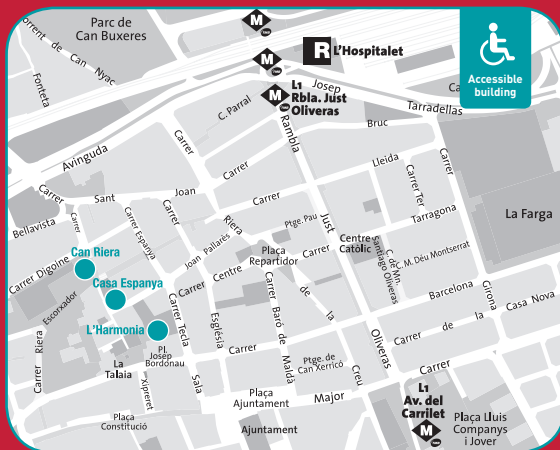
C. de la Riera de l'Escorxador, 17

Opening hours

Tuesday to Friday, 5 to 8 pm

Saturdays and Sundays, from 11 am to 2 pm / Closed Mondays and holidays

FREE ADMISSION



Check our
WEBSITE

More info: www.museul-h.cat



Facebook: MuseuLH



Twitter: @MuseuLH



Instagram: @museulh



ISSUU: museudelhospitalet



Youtube: MuseudelHospitalet